

tv EXPRESS

Man from
UNCLE
meets
Avenger
... Rosalie
Horner
reports

DAVID McCALLUM, star of the rumbustious series "Kidnapped" (ITV tonight, 6.30) was bidding a peaceful farewell to Britain.

He was sitting under a willow tree, glass of chilled champagne in hand.

Not a sound could be heard, save for the rustling leaves and the gentle clicking of counters on a backgammon board.

David's partner in this tranquil scene was Joanna Lumley, his co-star in his latest TV venture "Sapphire and Steel," to be broadcast by ITV in the summer.

They have just finished the first series and David was about to head back to his New York home and his wife, former model Katherine Carpenter and his two children.

But he may well be back. For ATV is

already contemplating a second series.

Sapphire and Steel, who have the qualities of their names, arrive on earth from another planet. They are unemotional creatures working for good.

"Please don't ask me to intellectualise about my part," said David bluntly. "I did it and then I got paid!"

It's more of a mystery than science fiction; written by P. J. Hammond it centres



After work... a quiet picnic for David and Joanna, stars of "Sapphire and Steel"

THE NEW DYNAMIC

DUO

on a rupture in the universe which the couple have been assigned to come to earth and seal.

The two try to impose themselves on a family — the parents disappear and their children try to find them.

It happens like this: Their son is doing his homework when he hears a slight throbbing noise in the house and runs upstairs to discover what it is.

His parents have gone and the clocks have stopped. He rings the police and almost immediately there is a knock on the front door.

So begins their encounter with Sapphire and Steel.

The series will go out twice a week from July after "Crossroads."

And for David there was an added plus to making it... it gave him a chance to visit his mother who now lives in Arundel, Sussex.

"I think when mothers and fathers devote 25 to 30 years to looking after you," he said, "once his game of backgammon with Joanna had finished, the rest of the children, the



The way they were: David and Joanna Lumley

A room with a view



delivered FREE
U.K. Mainland

A Summerhouse
by Larch Lap extends
your daytime living

A room with a view

delivered FREE
U.K. Mainland

A Summerhouse
by Larch Lap extends
your daytime living
space into your garden.

Specification:
8' x 6' (overall size
including canopy and
patio step 8' x 8'), Ridge
height 8', entrance height
6'6". Full-width sliding
doors. Two side windows.
Made from U.K. home
grown timbers and lined
with a durable board
providing thermal insula-
tion, resistance to rot,
stains and damp.

Roofed in tongued
and grooved boards
with green mineral felt
cover. Floor made from tongued
and grooved home grown timber.
Full instructions for easy assembly included.

8' x 6' Summerhouse

£265

Also available: 12' x 8' Summerhouse **£399**

Specification as for 8' x 6' model (overall size
including canopy and patio step 12' x 10').

Post to Selfridges Limited, P.O. Box 400, London W2 1XP.

Mr/Mrs/Miss (CAPS ONLY)

Address

Postcode

Item	Qty.
2872SH 8' x 6' Summerhouse £265	
2873SH 12' x 8' Summerhouse £399	

I enclose cheque/PO for £ payable to Selfridges Ltd. or charge to my account card (Selfridges/
Lewis's Ltd., Access, American Express, Barclaycard,
Diners Club - delete as necessary).

Number

Signed

Dep17A Reg. Off: Selfridges Ltd. 400 Oxford St. W1A 1AB. No. 97117.

For Credit Terms Contract

Summerhouse 8' x 6'. Send £27.00 initial
payment (12 further payments of £21.81).
Total £288.72 **Cash Price £265.**

Summerhouse 12' x 8'. Send £40.00 initial
payment (24 further payments of £17.95).
Total £470.80. **Cash Price £399.**

Interest Rate Equal to 10% P.A. Equivalent
to true annual rate of 19.7% on agreement
over 24 months.

Selfridges mail order

Post your order to SELFRIDGES LTD.,
P.O. Box 400, LONDON W2 1XP.

Satisfaction assured or money refunded
(provided merchandise is returned
promptly). Orders for UK addresses only.
Please allow 28 days for delivery.

AVAILABLE FOR PERSONAL SHOPPERS
AT SELFRIDGES, OXFORD ST., W1
Telephone enquiries for items shown
here to: 01-491 3315.

door. So begins their encounter
with Sapphire and Steel.

The series will go out
twice a week from July after
"Crossroads."

And for David there was an
added plus to making it...
it gave him a chance to visit
his mother who now lives in
Arundel, Sussex.

"I think when mothers and
fathers devote 25 to 30 years
to looking after you," he said,
once his game of backgammon
with Joanna had finished,
"it's nice if the children re-
ciprocate as the years creep
by. Doing "Kidnapped" and
then "Sapphire and Steel"
has meant I have been able to
see her even if my visits have
been rather spasmodic."

Confession

He made a most surprising
confession for a person who
was mobbed with Beatle-like
frenzy, years ago when most
of the world's youth were
obsessed with "The Man From
UNCLE" in which David
played the enigmatic Ilya
Kuryakin of imprecise Slavic
origin.

"I want to be a great-
grandfather," he announced.
"I can think of nothing
better. No responsibility for
the second time."

"I've got a 21-year-old son
(from his first marriage to
actress Jill Ireland, now
married to Charles Bronson).
But he has not produced any-
thing yet."

"Well, certainly nothing
that he's admitting to! But
I've set it up now with three
children first time round and
two from my present mar-
riage, so it's up to them to
get on with it."

Grateful

David McCallum is 46 this
year. But his open boyish
face and shiny fair hair
remind one of a carefree youth
20 years younger, happy to
beachcomb on California
sands.

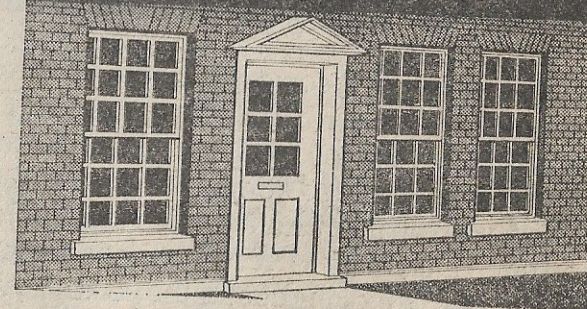
It turns out to be a calm,
deceptive exterior.

"As I get older," he said,
"when I wake up in the morn-
ing, I just feel grateful that
I've made it through the
night. I've had friends and
acquaintances who haven't
made it past 40."



The way they were: David and Joanna Lumley

Georgian Style Windows? Tudorglass double-glazing to match your home.



A new process enables Tudorglass to offer real double-
glazed replacement windows in the Georgian style. Tudorglass
can achieve a perfect match for your home whatever period
your windows are, including Leaded lights, made with genuine
hand-soldered lead, and Contemporary windows designed to
complement the appearance of your home.

Tudorglass is the leading British manufacturer of craftsman-
made double-glazed replacement windows and patio doors.
We offer a maintenance-free, virtually indestructible coating for
our frames in a wide range of colours. Tudorglass is the largest
manufacturer of period double-glazed units in the UK.
Complete the coupon for full colour brochure, including our
free survey and credit facilities.

To Tudor Glass, Dept. DE7, FREEPOST, Hounslow, TW4 5BR.
Tel: 01-572 2322

Please send me full details of your unique
range of double-glazed windows and doors
(and your finance facilities).

Tudorglass
LIMITED

Name

Address

Telephone